

GCC-S / Standard Clinical Centrifuge



GCC-S Clinical Centrifuge



*For simple, reliable
operation, the GCC-S
Clinical Centrifuge simply
can't be beat!*

The GCC-S Clinical Centrifuge has been designed for numerous clinical and research applications with simple yet robust features. The included twelve-position rotor accommodates 5mL, 7mL or 10mL culture or blood collection tubes and up to eight 15mL tubes (all adapters are included).

An easy to read LED display shows both time and speed and is easily programmed. The timer will not count down until the set speed is reached to ensure your separations and experiments work as intended. The manual door release is positioned on the side of the unit to ensure the GCC-S remains closed until you want access.

Features:

- Fast acceleration and deceleration
- Speed range of 300-4500rpm
- Independent control of speed & time
- Suitable for numerous clinical and research applications, including separations
- Ideal for use with 15ml centrifuge tubes and most Globe Scientific collection tubes
- Includes fixed angle rotor that holds up to twelve 5mL/7mL/10mL tubes or eight 15ml tubes
- All adaptor sleeves and risers included
- Audible alert function

Safety Features:

- Door interlock
- Excessive speed detection

Clinical Centrifuge



Easy to program interface with dual time and speed display



Twelve position rotor compatible with 5mL, 7mL, 10mL and 15mL tubes



Included rotor cavity sleeves and risers convert the rotor cavity for use with 5mL, 7mL or 10mL tubes

Specifications	GCC-S
Speed	300-4500rpm in 100rpm increments
Maximum RCF	2490xg
Speed Accuracy	±100rpm
Rotor Capacity	Twelve 5mL/7mL/10mL tubes or eight 15ml tubes
Run Time	1 sec – 99 min or continuous
Power	3A, 70W
Display	LED
Acceleration Time	23 Seconds
Braking Time	23 Seconds
Dimension (WxDxH)	301 x 354 x 217mm (11.9 x 13.9 x 8.5in)
Weight	6kg (13.2lbs)
Certifications	CE, cTÜVus, FCC, MCA
Warranty	2 Years

ORDERING INFORMATION

Item #	Description	Unit
GCC-S	Clinical Centrifuge, 12-Place, 120v, 60Hz, US Plug	Each
GCC-S-UK	Clinical Centrifuge, 12-Place, 230v, 50Hz, UK Plug	Each
GCC-S-EU	Clinical Centrifuge, 12-Place, 230v, 50Hz, EU Plug	Each
GCC-ADP	Rotor Cavity Sleeves and Risers, converts the rotor cavity for use with 5mL, 7mL and 10mL Tubes, 12 each of both Sleeves and Risers	24
GCC-AD1	Rotor Adapter Sleeves for 5mL, 7mL and 10mL Tubes	12
GCC-PLUG	Rotor Adapter Risers for: 5mL, 7mL and 10mL Tubes	12

www.globescientific.com

Customer Service, Sales and Technical Support:

Phone 1 (800) 394-4562 • 1 (201) 599-1400

Fax 1 (201) 599-1406

E-mail mail@globescientific.com



GCC-E / Enhanced Clinical Centrifuge



GCC-E Clinical Centrifuge



The accuracy, reliability and enhanced feature set of the GCC-E ensure worry-free operation for years to come!

Building on the solid platform of Globe's standard clinical centrifuge, the GCC-E adds an enhanced user interface with its easy to read backlit LCD display, high accuracy and automated self-diagnostics on startup. The GCC-E is suitable for numerous clinical and research applications and includes a twelve-position rotor that accommodates 5mL, 7mL or 10mL culture or blood collection tubes and up to eight 15mL tubes (all adapters are included).

Programming allows for setting by either speed or G-force. A quick spin function enables easy spin downs when a timed program isn't necessary. The added safety of an electric locked lid ensures users don't open the lid too soon after a protocol is completed.

Features:

- Simple programming for ease of use
- Intuitive menus with highly legible LCD display
- Rotor speed can be set by RPM or G-force
- Maintenance-free motor
- Quick spin function (pulse button)
- Electronic locking safety lid with automatic release
- Automatic self-diagnostics on startup (shows accumulative run time and retains last set parameters)
- Quick acceleration and deceleration
- All adaptor sleeves and risers included
- Audible alert function

Advanced Features:

- Speed/RCF set point
- Pulse function
- Audible alert function

Safety Features:

- Door interlock
- Excessive speed detection
- Automatic self-diagnostics

Clinical Centrifuge



Easy programming with high accuracy



Twelve position rotor compatible with 5mL, 7mL, 10mL and 15mL tubes



Included rotor cavity sleeves and risers convert the rotor cavity for use with 5mL, 7mL or 10mL tubes

Specifications	GCC-E
Speed	300-4500rpm in 100rpm increments
Maximum RCF	2490xg
Speed Accuracy	±20rpm
Rotor Capacity	Twelve 5mL/7mL/10mL tubes or eight 15ml tubes
Run Time	30 sec – 99 min or continuous
Power	3A, 70W
Display	LCD
Acceleration Time	20 Seconds
Braking Time	13 Seconds
Dimension (WxDxH)	301 x 354 x 217mm (11.9 x 13.9 x 8.5in)
Weight	6kg (13.2lbs)
Certifications	CE, UL, IVD
Warranty	2 Years

ORDERING INFORMATION

Item #	Description	Unit
GCC-E	Clinical Centrifuge, Enhanced, 12-Place, 120-240v, 50/60Hz	Each
GCC-ADP	Rotor Cavity Sleeves and Risers, converts the rotor cavity for use with 5mL, 7mL and 10mL Tubes, 12 each of both Sleeves and Risers	24
GCC-AD1	Rotor Adapter Sleeves for 5mL, 7mL and 10mL Tubes	12
GCC-PLUG	Rotor Adapter Risers for: 5mL, 7mL and 10mL Tubes	12



www.globescientific.com

Customer Service, Sales and Technical Support:

Phone 1 (800) 394-4562 • 1 (201) 599-1400

Fax 1 (201) 599-1406

E-mail mail@globescientific.com

GCC-MP / Multi-Purpose Clinical Centrifuge



For separations and spin downs in tubes from 0.2mL to 100mL and microplates, choose the GCC-MP!

GCC-MP Clinical Centrifuge

The Globe Scientific GCC-MP Multi-Purpose Clinical Centrifuge is a large capacity centrifuge that can be used in a variety of clinical lab applications. With a wide selection of fixed rotors as well as a swingout rotor and buckets, the GCC-MP is compatible with virtually any tube typically found in the clinical lab environment and can be customized to your specific applications and methods.

Safety features include door interlock, overspeed detection, over temperature detection and imbalance protection. Operation can be timed or momentary (pulse) and set by speed or G-force. Automatic rotor detection is also included.

Features:

- Simple yet feature-rich operation
- Fixed angle, swing bucket and microplate rotor options available
- Numerous safety features
- Accommodates tubes from 0.2mL to 100mL and microplates

Safety Features:

- Door interlock
- Overspeed detector
- Over-temperature detector
- Imbalance protection
- Automatic rotor identification

Clinical Centrifuge



Intuitive programming interface with acceleration / deceleration speed adjustment capability and up to nine (9) program locations for easy recall



The optional swing bucket rotor accommodates a number of tube bucket formats for a large variety of tube types / volumes (buckets sold separately)



Each swing bucket type includes removable tube cylinders for easy assembly, cleaning and autoclaving (50mL bucket seen here)



Specifications	GCC-MP
Maximum Speed	300-6000rpm, increment: 10rpm
Maximum RCF	4300×g
Speed Accuracy	±20rpm
Run Time	30 sec – 99 min or continuous
Program Storage	Yes, up to 9
Power	10A, 660W
Display	Backlit LCD
Acceleration Time	9 Seconds
Braking Time	10 Seconds
Dimension (WxDxH)	445 × 579 × 269mm (17.5 x 22.8 x 10.6in)
Weight	36kg (79.4lbs)
Certifications	CE, cTÜVus, FCC, MCA
Warranty	2 Years

ACCESSORIES FOR GCC-MP MULTI-PURPOSE CLINICAL CENTRIFUGE



GCC-MP-50ML8 – Aluminum alloy rotor, 8-place for 50mL centrifuge tubes



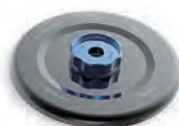
GCC-MP-15ML – Aluminum alloy rotor, 30-place for 15mL centrifuge tubes



GCC-MP-5ML – Aluminum alloy rotor with lid, fixing clips and o-ring, 18-place for 5mL conical bottom tubes



GCC-MP-2ML30 – Aluminum alloy rotor with lid, fixing clips and o-ring, 30-place for 1.5mL and 2.0mL microcentrifuge tubes



GCC-MP-PCR – Aluminum alloy rotor with lid, fixing clips and o-ring, 12-place for 0.2mL 8 position PCR strip



GCC-MP-SWING-100ML4 – Bucket for use with GCC-MP-SWING rotor, for 4 x 100mL tubes



GCC-MP-SWING-50ML8 – Buckets for use with GCC-MP-SWING rotor, for 8 x 50mL tubes



GCC-MP-SWING-15ML16 – Buckets for use with GCC-MP-SWING rotor, for 16 x 10mL, 12mL and 15mL tubes



GCC-MP-SWING – Aluminum alloy swing-out rotor, 4-place for buckets (buckets / tube adapters sold separately)



GCC-MP-SWING-7ML36 – Buckets for use with GCC-MP-SWING rotor, for 36 x 3mL and 7mL tubes



GCC-MP-SWING-PLATE – Aluminum alloy swing-out rotor for microplates (2-place)

All ordering information on last page >

Clinical Centrifuge

ORDERING INFORMATION

Item #	Description	Unit
GCC-MP	Clinical Centrifuge, multi-purpose, 120V, 60Hz, US plug (rotor not included)	Each
GCC-MP-UK-EU	Clinical Centrifuge, multi-purpose, 240V, 50Hz, UK & EU plugs (rotor not included)	Each
GCC-MP-2ML30	Rotor with Lid, aluminum alloy, fixing clips and o-ring, 6000rpm max, 30-place for 1.5mL and 2.0mL microcentrifuge tubes	Each
GCC-MP-2ML60	Rotor with Lid, aluminum alloy, fixing clips and o-ring, 6000rpm max, 60-place for 1.5mL and 2.0mL microcentrifuge tubes	Each
GCC-MP-5ML	Rotor with Lid, aluminum alloy, fixing clips and o-ring, 6000rpm max, 18-place for 5mL conical bottom tubes	Each
GCC-MP-15ML	Rotor, aluminum alloy, 4500rpm max, 30-place for 15mL centrifuge tubes	Each
GCC-MP-15ML-ADP	Rotor Adapter Risers, for use with 3mL tubes	10
GCC-MP-50ML6	Rotor with Lid, aluminum alloy, fixing clips and o-ring, 6000rpm max, 6-Place for 50mL Centrifuge Tubes	Each
GCC-MP-50ML8	Rotor, aluminum alloy, 5000rpm max, 8-place for 50mL centrifuge tubes	Each
GCC-MP-PCR	Rotor with Lid, aluminum alloy, fixing clips and o-ring, 6000rpm max, 12-place for 0.2mL 8 position PCR strips	Each
GCC-MP-SWING	Rotor, swing-out, aluminum alloy, 4-place for buckets (buckets / tube adapters sold separately)	Each
GCC-MP-SWING-100ML4	Buckets, for use with GCC-MP-SWING Rotor, for 4 x 100mL tubes (1 tube per bucket)	4
GCC-MP-SWING-50ML8	Buckets, for use with GCC-MP-SWING Rotor, for 8 x 50mL tubes (2 tubes per bucket)	4
GCC-MP-SWING-15ML16	Buckets, for use with GCC-MP-SWING Rotor, for 16 x 10mL, 12mL and 15mL tubes (4 tubes per bucket)	4
GCC-MP-SWING-7ML36	Buckets, for use with GCC-MP-SWING Rotor, for 36 x 3mL and 7mL tubes (9 tubes per bucket)	4
GCC-MP-SWING-PLATE	Rotor, swing-out, aluminum alloy, 4000rpm max, 2-place for microplates	Each



www.globescientific.com

Customer Service, Sales and Technical Support:

Phone 1 (800) 394-4562 • 1 (201) 599-1400

Fax 1 (201) 599-1406

E-mail mail@globescientific.com

GCH-24

Hematocrit Centrifuge



GCH-24 Hematocrit Centrifuge



For quiet, simple operation with low noise and a small footprint, choose Globe Scientific's GCH-24 Hematocrit Centrifuge!

The GCH-24 Hematocrit Centrifuge allows your lab to determine erythrocyte fractions in blood as well as micro solution separations using the included twenty-four place capillary rotor. The included rotor lids enhance user safety and are easy to remove or replace. TM

Programming is simple with the backlit LCD display, intuitive control buttons and parameter adjustment knob. The timer will not count down until the programmed speed is reached ensuring accurate results. Setpoint can be set by G-force or RPM.

Features:

- Speed range of 200-14000rpm, max. RCF 18620×g
- Independent control of speed & time
- Easy operation with intuitive menu and easy-to-read display
- Maintenance-free brushless DC motor
- Pulse operation for quick spins
- Included hematocrit rotor: 24 capillary capacity, max. speed of 12000rpm
- Optional tube rotor: 24 place 1.5/2mL capacity, max. speed of 14000rpm
- Includes pulse operation (quick spin)

Advanced Features:

- Speed/RCF switch
- Short-time run function
- Audible alert function

Safety Features:

- Door interlock
- Overspeed detector
- Over-temperature detector
- Automatic internal diagnosis
- Automatic rotor identification

GCH-24

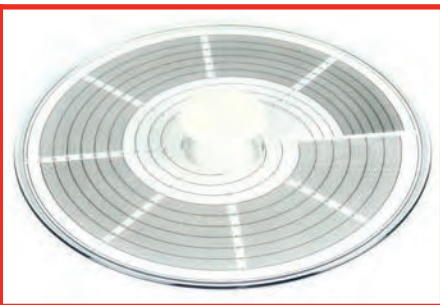
Hematocrit Microcentrifuge



Easy, accurate programming with digital adjustment



The GCH-24 comes with 24 place aluminum capillary rotor



The GCH-24 also includes a reading disk lid for accurate measurements

Specifications	GCH-24
Speed	200-14000rpm in 10rpm increments
Maximum RCF	18620×g
Speed Accuracy	±20rpm
Run Time	30sec – 99min or continuous
Power	5A, 500W
Display	Backlit LCD
Acceleration Time	30 Seconds
Braking Time	30 Seconds
Dimension (WxDxH)	280 x 364 x 266mm (11.0 x 14.3 x 10.5in)
Weight	10kg (22lbs)
Certifications	CE, cTÜVus, FCC, MCA
Warranty	2 Years

ORDERING INFORMATION

Item #	Description	Unit
GCH-24	Hematocrit Centrifuge, 24-Place, 120v, 60Hz, US Plug, (includes: 24 place hematocrit rotor kit with lid and reading disk)	Each
GCH-24-UK	Hematocrit Centrifuge, 24-Place, 230v, 50Hz, UK Plug, (includes: 24 place hematocrit rotor kit with lid and reading disk)	Each
GCH-24-EU	Hematocrit Centrifuge, 24-Place, 230v, 50Hz, EU Plug, (includes: 24 place hematocrit rotor kit with lid and reading disk)	Each
GCH-24-ROT-1.5-2	Rotor for use with GCH-24 Hematocrit Centrifuge with Lid, Fixing Clips and O-Ring, 14000rpm max, 24-Place for 1.5mL and 2.0mL Microcentrifuge Tubes	Each
GCM-24-AD2	Rotor Adapters for use with GCH-24-ROT-1.5-2, for 0.2mL Tubes	24
GCM-24-AD5	Rotor Adapters for use with GCH-24-ROT-1.5-2, for 0.5mL Tubes	24

www.globescientific.com

Customer Service, Sales and Technical Support:

Phone 1 (800) 394-4562 • 1 (201) 599-1400

Fax 1 (201) 599-1406

E-mail mail@globescientific.com

globe[®]
SCIENTIFIC INC.

© 2019 Globe Scientific Inc. All rights reserved.

The Globe Scientific logo is a registered trademark of Globe Scientific Inc. GCH-24 Flyr 19064 1M

GCM Series

Mini Centrifuges



GCM Series Mini Centrifuges

Globe's GCM Series was designed with your lab in mind . . . whether you spin-down microcentrifuge tubes, PCR tubes or PCR strip tubes, the GCM will provide you with reliable performance use after use. Operating the GCM is quick and easy: close the lid to accelerate to 7,000rpm and simply open the lid for quick deceleration to stop.

Included with all GCM Mini Centrifuges are an eight-position microcentrifuge tube rotor for 1.5mL and 2.0mL tubes, a PCR tube rotor that accommodates 0.2mL tubes and strips as well as eight adapters for 0.2mL tubes and eight adapters for 0.5mL tubes. Changing rotors requires no tools—simply pull up to remove and press down to replace.

Features:

- Ideal for quick spin-downs and microfiltration
- EZ-Swap™ rotor attachments can be interchanged without tools
- Includes 8 position 1.5mL/2mL rotor, 16 position 0.2mL PCR tubes and strips rotor, 8 each 0.2ml adapters and 8 each 0.5ml adapters
- Available in your choice of 3 lid colors: red, blue and green
- Fast acceleration and braking
- “Close to start – open to stop” functionality
- 7000rpm speed (2680 x g)
- Small, lightweight and portable
- Runs quietly

Mini Centrifuges



Included accessories for GCM Series Mini Centrifuges



GCM Series Specifications	
Maximum Speed	7000rpm (fixed)
Maximum RCF	2680×g
Rotor Capacity	Eight 0.2/0.5/1.5/2.0mL tubes, sixteen 0.2mL PCR tubes or two 0.2mL PCR 8 strips
Run Time	Continuous operation
Power	20W
Noise level	≤45dB
Dimension (WxDxH)	160 x 170 x 122mm (6.3 x 6.7 x 4.8in)
Weight	0.5kg (1.1lbs)
Certifications	CE, cTÜVus, FCC, MCA
Warranty	2 Years

ORDERING INFORMATION

Item #	Description	Unit
GCM-B	Mini Centrifuge, 8-Place, 7000rpm Fixed Speed, Blue Lid 120v, 60Hz, US Plug	Each
GCM-G	Mini Centrifuge, 8-Place, 7000rpm Fixed Speed, Green Lid 120v, 60Hz, US Plug	Each
GCM-R	Mini Centrifuge, 8-Place, 7000rpm Fixed Speed, Red Lid 120v, 60Hz, US Plug	Each
GCM-B-UK	Mini Centrifuge, 8-Place, 7000rpm Fixed Speed, Blue Lid 240v, 50Hz, UK Plug	Each
GCM-G-UK	Mini Centrifuge, 8-Place, 7000rpm Fixed Speed, Green Lid 240v, 50Hz, UK Plug	Each
GCM-R-UK	Mini Centrifuge, 8-Place, 7000rpm Fixed Speed, Red Lid 240v, 50Hz, UK Plug	Each
GCM-B-EU	Mini Centrifuge, 8-Place, 7000rpm Fixed Speed, Blue Lid 240v, 50Hz, EU Plug	Each
GCM-G-EU	Mini Centrifuge, 8-Place, 7000rpm Fixed Speed, Green Lid 240v, 50Hz, EU Plug	Each
GCM-R-EU	Mini Centrifuge, 8-Place, 7000rpm Fixed Speed, Red Lid 240v, 50Hz, EU Plug	Each
GCM-ROT	Rotor, 7000rpm, 8-Place for 1.5 and 2.0mL Microcentrifuge Tubes	Each
GCM-PCR	Rotor, 7000rpm, 2 x 8 Position for 0.2mL PCR Tubes and Strips	Each
GCM-AD2	Rotor Adapter for 0.2mL Microcentrifuge Tubes, 8 each	8
GCM-AD5	Rotor Adapter for 0.5mL Microcentrifuge Tubes, 8 each	8

www.globescientific.com

Customer Service, Sales and Technical Support:

Phone 1 (800) 394-4562 • 1 (201) 599-1400

Fax 1 (201) 599-1406

E-mail mail@globescientific.com



GCM-12 / High Speed Microcentrifuge



GCM-12 Microcentrifuge



The GCM-12 is a revelation in microcentrifuges: small enough to fit any lab, yet feature-filled at a value that cannot be beat. The GCM-12 is compatible with numerous biological, chemistry, clinical and research applications including molecular biology, blood labs, DNA protocols and many more.

The GCM-12 includes an abundance of features found in much more expensive models, including a large LCD display with accurate control, a brushless DC motor, pulse operation for quick spins, high centrifugal force, interlocking safety lid, quiet running and more. The included twelve position rotor is compatible with 1.5ml and 2.0mL microcentrifuge tubes or with 0.2mL and 0.5mL microcentrifuge tubes when using optional adapters (sold separately).

Features:

- Compact yet powerful with max 15000rpm / 15100 x g
- Ideal for many laboratory applications
- Quick acceleration / deceleration
- Quiet operation
- Premium features at an obtainable cost

Advanced Features:

- Speed/RCF switch
- Pulse operation
- Audible alert function

Safety Features:

- Door interlock
- Excessive speed detection
- Excessive temperature detection
- Automatic self-diagnostics

High Speed Microcentrifuge



Included 12-place rotor with aerosol lid holds both 1.5mL and 2.0mL microcentrifuge tubes



Specifications	GCM-12
Speed	500-15000rpm in 100rpm increments
Maximum RCF	15100 × g
Speed Accuracy	±20rpm
Rotor Capacity	Twelve 1.5mL/2.0mL tubes or twelve 0.2mL/0.5mL tubes with optional adapters
Run Time	30 sec – 99 min or continuous
Power	3A, 100W
Noise level	≤54dB
Acceleration Time	11 Seconds
Braking Time	9 Seconds
Dimension (WxDxH)	255 x 245 x 140mm (10.0 x 9.6 x 5.5in)
Weight	6kg (13.2lbs)
Certifications	EMC, CE, FCC, ICES, cTÜVus, CB
Warranty	2 Years

ORDERING INFORMATION

Item #	Description	Unit
GCM-12	High Speed Microcentrifuge, 12-Place, 120-240v, 50/60Hz	Each
GCM-12-AD2	Rotor Adapters, for 0.2mL Tubes	24
GCM-12-AD5	Rotor Adapters, for 0.5mL Tubes	24

globe[®]
SCIENTIFIC INC.

www.globescientific.com

Customer Service, Sales and Technical Support:

Phone 1 (800) 394-4562 • 1 (201) 599-1400

Fax 1 (201) 599-1406

E-mail mail@globescientific.com

© 2019 Globe Scientific Inc. All rights reserved.

The Globe Scientific logo is a registered trademark of Globe Scientific Inc.

GCM-12 Flyr 19064 1M



GCM-24

Microcentrifuge



GCM-24 Microcentrifuge



Count on the GCM-24 microcentrifuge for a lifetime of robust service!

The GCM-24 is a powerful, feature-rich microcentrifuge at an affordable cost. It is easily programmable through a combination of LCD display, control buttons and parameter adjustment knob. The GCM-24 is compatible with numerous biological, chemistry, clinical and research applications including molecular biology, blood labs, DNA protocols and many more.

Standard features include a high strength 24 place 1.5mL and 2.0mL aluminum alloy rotor with biosafety aerosol containment lid (all of which can be fully autoclaved). Multi-flow air cooling ensures your temperature sensitive samples are safe. The GCM-24 features pulse operation for quick spins, a unique temperature monitor and much more.

Features:

- Reliable and intuitive LCD display
- Temperature monitoring for handling of critical samples sensitive to fluctuations
- Quiet operation
- Maintenance-free brushless DC motor
- Fully autoclavable 1.5mL and 2.0mL aluminum rotor with aerosol lid included as standard
- Includes pulse operation (quick spin)
- Patented multi-flow air cooling design ensures fast, efficient cooling of the rotor and helps lower energy consumption
- Optional rotors available

Advanced Features:

- Speed/RCF switch
- Quick spin function
- Audible alert function

Safety Features:

- Dual door safety interlock
- Excessive speed detection
- Automatic internal diagnostics

Microcentrifuge



The GCM-24 can be easily programmed using the intuitive control panel buttons and parameter adjustment knob



Included 1.5mL and 2.0mL aluminum alloy rotor and biosafety aerosol containment lid

GCM-24 Specifications

Maximum Speed	15000rpm (200-15000rpm), increment:10rpm
Maximum RCF	21380xg, increment:10xg
Speed Accuracy	±20rpm
Rotor Capacity	Twenty-four 1.5mL/2.0mL tubes
Run Time	30 sec – 99 min or continuous
Power	5A, 500W
Acceleration Time	25 Seconds
Braking Time	25 Seconds
Dimension (WxDxH)	280 x 364 x 266mm (11.0 x 14.3 x 10.5in)
Weight	12kg / 26.5lbs
Certifications	CE, cTÜVus, FCC, MCA
Warranty	2 Years

ORDERING INFORMATION

Item #	Description	Unit
GCM-24	Microcentrifuge, 24-Place, 120v, 60Hz, US Plug, with 24-Place Rotor for 1.5mL & 2.0mL Microcentrifuge Tubes	Each
GCM-24-UK	Microcentrifuge, 24-Place, 230v, 50Hz, UK Plug, with 24-Place Rotor for 1.5mL & 2.0mL Microcentrifuge Tubes	Each
GCM-24-EU	Microcentrifuge, 24-Place, 230v, 50Hz, EU Plug, with 24-Place Rotor for 1.5mL & 2.0mL Microcentrifuge Tubes	Each
GCM-24-5MLR	Rotor, Aluminum Alloy with Lid, Fixing Clips and O-Ring, 15000rpm max, 18-Place for 5mL Culture Tubes	Each
GCM-24-5ML	Rotor, Aluminum Alloy with Lid, Fixing Clips and O-Ring, 15000rpm max, 12-Place for 5mL Eppendorf Style Tubes	Each
GCM-24-05ML	Rotor, Aluminum Alloy with Lid, Fixing Clips and O-Ring, 15000rpm max, 36-Place for 0.5mL Microcentrifuge Tubes	Each
GCM-24-PCR	Rotor, Aluminum Alloy with Lid, Fixing Clips and O-Ring, 15000rpm max, 4-Place for 8 position 0.2mL PCR Strips	Each
GCM-24-AD2	Rotor Adapters, for 0.2mL Tubes	24
GCM-24-AD5	Rotor Adapters, for 0.5mL Tubes	24
GCM-24-AD52	Rotor Adapters for use with GMC-24-05ML Rotor, for 0.2mL Tubes	36

www.globescientific.com

Customer Service, Sales and Technical Support:

Phone 1 (800) 394-4562 • 1 (201) 599-1400

Fax 1 (201) 599-1406

E-mail mail@globescientific.com

globe[®]
SCIENTIFIC INC.

GCM-R-24 / Refrigerated Microcentrifuge



GCM-R-24 Refrigerated Microcentrifuge



For the best refrigerated microcentrifuge with premium features at an affordable cost, the choice is clear: Globe Scientific's GCM-R-24!

Globe Scientific's GCM-R-24 Refrigerated Microcentrifuge is based on the solid foundation of the GCM-24 and adds refrigerated control for your critical temperature sensitive samples. Suitable for various applications, including molecular biology, chemistry, and more, the GCM-R-24 has an intuitive button and knob interface for quick programming, a high strength 24 place aluminum alloy rotor with a biosafety aerosol containment lid (all of which can be fully autoclaved), a powerful yet quiet compressor for fast, accurate temperature control and much more. The GCM-R-24 can cool its rotor chamber and samples down to 4°C within just seven minutes of operation — even at maximum speed and capacity!

Features:

- Pre-cooling ensures optimal protection of the sample before operation
- Guaranteed 4°C cooling of both chamber and samples within only 7 minutes — even at maximum speed and capacity utilization
- Audible alert function
- Dual lid lock function ensures samples are kept at temperature even after centrifugation
- Intermittent temperature control mode, CFC-free refrigerant and low carbon life rotor capacity
- Fully autoclavable aluminum rotor with aerosol lid included as standard
- Optional rotors available
- Quiet operation (noise level ≤ 54dB)
- Maintenance-free brushless DC motor

Advanced Features:

- Speed/RCF switch
- Quick spin function
- Audible alert function

Safety Features:

- Dual door safety interlock
- Over-temperature detection
- Excessive speed detection
- Automatic internal diagnostics

Refrigerated Microcentrifuge



The GCM-R-24 can be easily programmed using the intuitive control panel buttons and parameter adjustment knob



Included 24-place aluminum alloy rotor holds both 1.5mL and 2.0mL microcentrifuge tubes



Included biosafety aerosol containment lid

GCM-R-24 Specifications

Maximum Speed	15000rpm(200-15000rpm), increment:10rpm
Maximum RCF	21380xg, increment:10xg
Speed Accuracy	±20rpm
Temperature Range	-20°C - 40°C
Rotor Capacity	Twenty-four 1.5mL/2.0mL tubes
Run Time	30 sec – 99 min or continuous
Power	10A, 400W
Acceleration Time	25 Seconds
Braking Time	25 Seconds
Dimension (W×D×H)	338 x 580 x 324mm (13.3 x 22.8 x 12.8in)
Weight	30kg / 66.1lbs
Certifications	CE, cTÜVus, FCC, MCA
Warranty	2 Years

ORDERING INFORMATION

Item #	Description	Unit
GCM-R-24	Refrigerated Microcentrifuge, 24-Place, 120v, 60Hz, US Plug, with 24-Place Rotor for 1.5mL & 2.0mL Microcentrifuge Tubes	Each
GCM-R-24-UK	Refrigerated Microcentrifuge, 24-Place, 230v, 50Hz, UK Plug, with 24-Place Rotor for 1.5mL & 2.0mL Microcentrifuge Tubes	Each
GCM-R-24-EU	Refrigerated Microcentrifuge, 24-Place, 230v, 50Hz, EU Plug, with 24-Place Rotor for 1.5mL & 2.0mL Microcentrifuge Tubes	Each
GCM-24-5MLR	Rotor, Aluminum Alloy with Lid, Fixing Clips and O-Ring, 15000rpm max, 18-Place for 5mL Culture Tubes	Each
GCM-24-5ML	Rotor, Aluminum Alloy with Lid, Fixing Clips and O-Ring, 15000rpm max, 12-Place for 5mL Eppendorf Style Tubes	Each
GCM-24-05ML	Rotor, Aluminum Alloy with Lid, Fixing Clips and O-Ring, 15000rpm max, 36-Place for 0.5mL Microcentrifuge Tubes	Each
GCM-24-PCR	Rotor, Aluminum Alloy with Lid, Fixing Clips and O-Ring, 15000rpm max, 4-Place for 8 position 0.2mL PCR Strips	Each
GCM-24-AD2	Rotor Adapters, for 0.2mL Tubes	24
GCM-24-AD5	Rotor Adapters, for 0.5mL Tubes	24
GCM-24-AD52	Rotor Adapters for use with GMC-24-05ML Rotor, for 0.2mL Tubes	36

www.globescientific.com

Customer Service, Sales and Technical Support:

Phone 1 (800) 394-4562 • 1 (201) 599-1400

Fax 1 (201) 599-1406

E-mail mail@globescientific.com



GVM-AS / Variable Speed Vortex Mixer



GVM-AS Vortex Mixer

*For the best vortex mixer and wide versatility,
choose the Globe Scientific GVM-AS!*

The GVM-AS Variable Speed Vortex Mixer is the best choice for vortex mixing in your lab. Speed adjustment between 100-2500rpm is as easy as rotating the analog dial. A slight press on the top cup quickly and efficiently vortexes virtually any tube. Continuous run function and available adapters allow for simultaneous mixing of multiple samples. A heavy-duty cast aluminum base and suction cup feet make the GVM-AS extremely stable despite its compact footprint.

Features:

- Touch operation or continuous mode
- Variable speed control from 0 to 2500rpm
- Suitable for various tube types and mixing applications with optional adapters
- Specially designed vacuum suction feet for stability
- Robust cast aluminum construction
- Small footprint
- Rubber suction feet ensure placement and mitigate vibration
- Wide variety of accessories for virtually every tube used in your lab
- Spill resistant chassis

Variable Speed Vortex Mixer



Specifications	GVM-AS
Voltage	110-120V/220-230V, 50/60Hz
Power	60W
Mixing Motion	Orbital
Orbital Diameter	4mm
Motor Type	Shaded pole motor
Motor Rating Input	58W
Motor Rating Output	10W
Speed Range	0-2500rpm
Speed Display	Scale
Run Type	Touch operation or continuous
Dimensions (WxDxH)	127 x 130 x 160mm (5 x 5.1 x 6.3in)
Weight	3.5kg (7.7lbs)
Operating Temperature	5° - 40° C
Permissible Relative Humidity	80%RH (non-condensing)
Protection Class	IP21
Warranty	2 Years

ORDERING INFORMATION

Item #	Description	Unit
GVM-AS	Variable Speed Vortex Mixer, 120v, 60Hz, US Plug	Each
GVM-AS-UK	Variable Speed Vortex Mixer, 230v, 50Hz, UK Plug	Each
GVM-AS-EU	Variable Speed Vortex Mixer, 230v, 50Hz, EU Plug	Each
GVM-AS-CUP	Tube Replacement Cup, Rubber (for Tubes and Vessels with a Diameter less than 30mm)	Each
GVM-AS-ROD	Tube Holding Rod for Foam Tube Adapters	Each
GVM-AS-PLATE	Top Plate, Round, Universal, 100mm (to be used with all Foam Tube Adapters)	Each
GVM-AS-ADAPT48	Tube Adapter, Foam, 48-Place, for 6mm Tubes (Must use with Top Plate VM-AS-PLATE)	Each
GVM-AS-ADAPT15	Tube Adapter, Foam, 15-Place, for 10mm Tubes (Must use with Top Plate VM-AS-PLATE)	Each
GVM-AS-ADAPT12	Tube Adapter, Foam, 12-Place, for 12mm Tubes (Must use with Top Plate VM-AS-PLATE)	Each
GVM-AS-ADAPT8-16	Tube Adapter, Foam, 8-Place, for 16mm Tubes (Must use with Top Plate VM-AS-PLATE)	Each
GVM-AS-ADAPT8-20	Tube Adapter, Foam, 8-Place, for 20mm Tubes (Must use with Top Plate VM-AS-PLATE)	Each
GVM-AS-PAD	Platform Dimpled Pad, 99mm Diameter (Must use with Top Plate VM-AS-PLATE)	Each
GVM-AS-FOOT	Rubber Vacuum Suction Foot with Screw for use with GVM Series Vortex Mixers	Each

www.globescientific.com

Customer Service, Sales and Technical Support:

Phone 1 (800) 394-4562 • 1 (201) 599-1400

Fax 1 (201) 599-1406

E-mail mail@globescientific.com



GVM-FS / Fixed Speed Vortex Mixer



GVM-FS Vortex Mixer

For simple, reliable vortex mixing, choose the GVM-FS!

The GVM-FS has a fixed speed of 2500rpm. The small 4mm orbit of the GVM-FS creates a 'vibratory' motion that quickly ensures homogeneity of your samples. With a slight press on the top cup, you can quickly and efficiently vortex virtually any tube. For mixing a larger number of tubes, you can choose constant run and select from a number of compatible accessories preferred for your specific tube format or method. The GVM-FS has a small footprint yet is extremely stable due to its cast aluminum base and available suction cup feet.

Features:

- Touch operation or continuous mode
- Fixed speed control of 2500rpm
- Used for various mixing applications with optional adapters
- Specially designed available vacuum suction feet for body stability
- Robust aluminum-cast construction
- Small footprint yet extremely stable
- Rubber suction feet ensure placement and mitigate vibration
- Wide variety of accessories for virtually every tube used in your lab
- Spill resistant chassis

Fixed Speed Vortex Mixer



GVM-AS-CUP



GVM-AS-ADAPT48



GVM-AS-ADAPT15



GVM-AS-ADAPT12



GVM-AS-ADAPT8-16



GVM-AS-ADAPT8-20



GVM-AS-PLATE



GVM-AS-PAD

GVM-FS Specifications

Voltage	110-120V/220-230V, 50/60Hz
Power	60W
Mixing Motion	Orbital
Orbital Diameter	4mm
Motor Type	Shaded pole motor
Motor Rating Input	58W
Motor Rating Output	10W
Speed Range	0-2500rpm
Speed Display	Scale
Run Type	Touch operation or continuous
Dimensions (WxDxH)	127 x 130 x 160mm (5 x 5.1 x 6.3in)
Weight	3.5kg (7.7lbs)
Operating Temperature	5° - 40° C
Permissible Relative Humidity	80%RH (non-condensing)
Protection Class	IP21
Warranty	2 Years

ORDERING INFORMATION

Item #	Description	Unit
GVM-FS	Fixed Speed Vortex Mixer, 120v, 60Hz, US Plug	Each
GVM-FS-UK	Fixed Speed Vortex Mixer, 230v, 50Hz, UK Plug	Each
GVM-FS-EU	Fixed Speed Vortex Mixer, 230v, 50Hz, EU Plug	Each
GVM-AS-CUP	Tube Replacement Cup, Rubber (for Tubes and Vessels with a Diameter less than 30mm)	Each
GVM-AS-ROD	Tube Holding Rod for Foam Tube Adapters	Each
GVM-AS-PLATE	Top Plate, Round, Universal, 100mm (to be used with all Foam Tube Adapters)	Each
GVM-AS-ADAPT48	Tube Adapter, Foam, 48-Place, for 6mm Tubes (Must use with Top Plate GVM-AS-PLATE)	Each
GVM-AS-ADAPT15	Tube Adapter, Foam, 15-Place, for 10mm Tubes (Must use with Top Plate GVM-AS-PLATE)	Each
GVM-AS-ADAPT12	Tube Adapter, Foam, 12-Place, for 12mm Tubes (Must use with Top Plate GVM-AS-PLATE)	Each
GVM-AS-ADAPT8-16	Tube Adapter, Foam, 8-Place, for 16mm Tubes (Must use with Top Plate GVM-AS-PLATE)	Each
GVM-AS-ADAPT8-20	Tube Adapter, Foam, 8-Place, for 20mm Tubes (Must use with Top Plate GVM-AS-PLATE)	Each
GVM-AS-PAD	Platform Dimpled Pad, 99mm Diameter (Must use with Top Plate GVM-AS-PLATE)	Each
GVM-AS-FOOT	Rubber Vacuum Suction Foot with Screw for use with GVM Series Vortex Mixers	Each

www.globescientific.com

Customer Service, Sales and Technical Support:

Phone 1 (800) 394-4562 • 1 (201) 599-1400

Fax 1 (201) 599-1406

E-mail mail@globescientific.com



GVM-MINI / Fixed Speed Mini Vortex Mixer



*For basic vortexing in a small package,
choose the GVM-MINI!*

When looking for a basic, fixed speed vortex mixer with a small footprint for your limited bench space, look no further than the Globe Scientific GVM-MINI! Despite its small size, the GVM-MINI has a wide, stable base to remain in place when in use. When you press your tube down on the top cup, the 3000rpm and small 4.8mm orbit create a 'vibratory' motion to quickly and effectively mix most tube sizes.

Features:

- Touch operation
- Fixed speed control of 3000rpm
- Used for mixing various tube sizes and formats
- Small footprint yet extremely stable
- Rubber suction feet ensure placement and mitigate vibration
- Spill resistant chassis

ORDERING INFORMATION

Item #	Description	Unit
GVM-MINI	Fixed Speed Mini Vortex Mixer, 120v, 60Hz, US Plug	Each
GVM-MINI-UK	Fixed Speed Mini Vortex Mixer, 240v, 50Hz, UK Plug	Each
GVM-MINI-EU	Fixed Speed Mini Vortex Mixer, 240v, 50Hz, EU Plug	Each

GVM-MINI Specifications

Voltage	100-240V,50/60Hz
Power	12W
Mixing motion	Orbital
Orbital diameter	4.8mm
Motor rating output	10W
Speed	3000rpm (fixed)
Run type	Touch operation
Dimensions[WxDxH]	133×133×80mm / 5.2 x 5.2 x 3.1in
Weight	0.6kg / 1.3lbs
Operating Temperature	5 to 40°C
Permissible relative humidity	80%RH (non-condensing)
Warranty	2 Years

GTD-1

Vacuum Tube Decapper



GTD-1 Vacuum Tube Decapper

The Globe Scientific GTD-1 decapper is a semi-automated system for safely and efficiently removing caps from primary blood and urine tubes. With three available carousels, the GTD-1 covers most common volume tubes. By using a simple yet effective design, the unit helps limit aerosol exposure commonly associated with the opening of blood tubes, finger injury due to broken glass and repetitive strain injury. Technicians can expect a throughput of approximately 60 tubes per minute and free their time to tackle more productive activities.

Features:

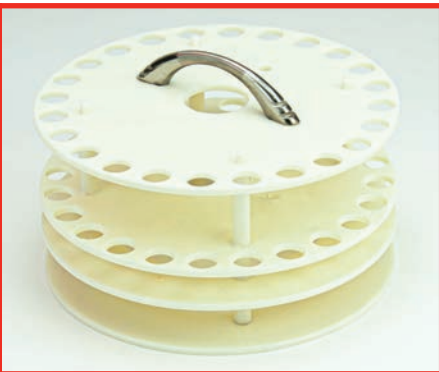
- 3 Carousel options for common vacuum tube sizes:
 - 13mm x 75mm (included)
 - 13mm x 100mm (included)
 - 16mm x 100mm (optional)
- 60 Tubes per minute throughput
- Simple plug & play operation
- Improved biosafety in your lab

GTD-1

Vacuum Tube Decapper



The cap expulsion tube can be mounted to expel the caps to either side of the GTD-1.



The GTD-1 comes complete with two carousels to hold the most common vacuum tube sizes: 13mm x 100mm and 13mm x 75mm. An optional 16mm x 100mm carousel is also available.

GTD-1 Specifications

Throughput	Approximately 60 tubes per minute
Carousel capacity	24 tubes
Carousel sizes	Ø13mm x 75mm (included) Ø13mm x 100mm (included) Ø16mm x 100mm (optional)
Dimensions (WxDxH)	420 x 250 x 200mm (7.9 x 6.3 x 6.3 in)
Weight	13kg / 28.7lbs
Voltage	120v 60Hz or 240v 50Hz
Operating temperature	5-40°C
Permissible relative humidity	80%RH (non-condensing)
Warranty	2 Years

ORDERING INFORMATION

Item #	Description	Unit
GTD-1	Vacuum Tube Decapper, 120v, 60Hz, US Plug, includes 13mm x 75mm and 13mm x 100mm carousels	Each
GTD-1-UK-EU	Vacuum Tube Decapper, 240v, 50Hz, UK and EU Plugs, includes 13mm x 75mm and 13mm x 100mm carousels	Each
GTD-1-16	16mm x 100mm Vacuum Tube Carousel, 24-place	Each
GTD-1-13-100	13mm x 100mm Vacuum Tube Carousel, 24-place	Each
GTD-1-13-75	13mm x 75mm Vacuum Tube Carousel, 24-place	Each

www.globescientific.com

Customer Service, Sales and Technical Support:

Phone 1 (800) 394-4562 • 1 (201) 599-1400

Fax 1 (201) 599-1406

E-mail mail@globescientific.com



© 2020 Globe Scientific Inc. All rights reserved.

The Globe Scientific logo is a registered trademark of Globe Scientific Inc. GTD-1 Flyr 20042 1M

GTR-FS / Fixed Speed

Single Tier Tube Rocker



The GTR-FS fixed-speed tube rocker is the best choice for basic laboratory tube mixing applications. With its see-saw motion, a fixed speed of 24rpm and an angle of +/-25° it provides optimal mixing. The ridged platform pad design allows the operator to place any tube from 1.5mL to 50mL on the unit, turn the power switch on and walk away.

Features:

- Simple plug & play operation
- Ridge pad design for easy, stable tube placement
- Small size uses minimal bench space
- Accommodates tubes from 1.5mL to 50mL

GTR-FS Fixed Speed Single Tier Tube Rocker accommodates (6) 50mL tubes. See reverse side for additional tube size accommodations.

Fixed Speed Single Tier Tube Rocker

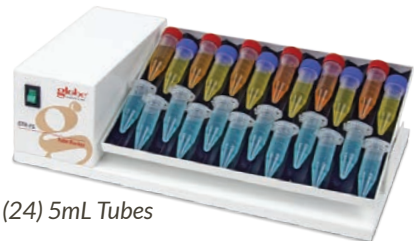
Also ideal for a variety of additional tube sizes:



Accommodates (6)
50mL Tubes



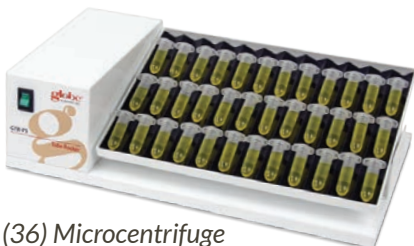
(12) 15mL Tubes



(24) 5mL Tubes



(12) Blood Collection
Tubes (5mL, 7mL, 10mL or 15mL)



(36) Microcentrifuge
Tubes (1.5mL or 2.0mL)

GTR-FS Specifications

Working area	252mm W x 170mm D (9.9in W x 6.7in D)
Maximum load	7lbs (3.2kg)
Maximum tilt angle	25°
Voltage	120v 60Hz or 240v 50Hz
Power	6W
Speed	24rpm fixed
Dimensions (WxDxH)	346x196x95mm / 13.6 x 7.7 x 3.7in
Weight	2.5kg / 5.5lbs
Operating temperature	5-50 °C
Permissible relative humidity	80%RH (non-condensing)
Warranty	2 Years

ORDERING INFORMATION

Item #	Description	Unit
GTR-FS	Tube Rocker, single tier, 120v, 60Hz, US plug, 9.9" x 6.7" platform, 25rpm	Each
GTR-FS-UK-EU	Tube Rocker, single tier, 240v, 50Hz, UK & EU plugs, 9.9" x 6.7" platform, 25rpm	Each

If a single platform isn't enough, ask about the space-saving design of Globe Scientific's GTR-2-FS Two-Tier Tube Rocker!



GTR-2-FS



www.globescientific.com

Customer Service, Sales and Technical Support:

Phone 1 (800) 394-4562 • 1 (201) 599-1400
 Fax 1 (201) 599-1406
 E-mail mail@globescientific.com

GTR-2-FS / Fixed Speed Two-Tier Tube Rocker



*GTR-2-FS
Fixed Speed Two-Tier Tube Rocker*

The GTR-2-FS fixed-speed tube rocker takes the proven design of the GTR-FS single tier model and adds another tier for even more capacity. With its see-saw motion, a fixed speed of 24rpm and an angle of +/-25° it provides optimal mixing. The ridged platform pad design allows the operator to place any tube from 1.5mL to 50mL on either tier of the unit, turn the power switch on and walk away.

Features:

- Adds an additional platform tier for double the capacity
- Simple plug & play operation
- Ridge pad design for easy, stable tube placement
- Small size uses minimal bench space
- Accommodates tubes from 1.5mL to 50mL

***When a single platform isn't enough,
choose the space-saving design of the
Globe Scientific GTR-2-FS!***

Fixed Speed Two-Tier Tube Rocker



Accommodates (12) 50mL Tubes

Also ideal for a variety of additional tube sizes:

(24) 15mL Tubes

(48) 5mL Tubes

(24) Blood Collection Tubes (5mL, 7mL, 10mL or 15mL)

(27) Microcentrifuge Tubes (1.5mL or 2.0mL)

GTR-2-FS Specifications

Working area (each tier)	252mm W x 170mm D (9.9in W x 6.7in D)
Maximum load	7lbs (3.2kg)
Maximum tilt angle	25°
Voltage	120v 60Hz or 240v 50Hz
Power	6W
Speed	24rpm fixed
Dimensions (WxDxH)	346x196x170mm / 13.6 x 7.7 x 7in
Weight	2.7kg / 6lbs
Operating temperature	5-50 °C
Permissible relative humidity	80%RH (non-condensing)
Warranty	2 Years

ORDERING INFORMATION

Item #	Description	Unit
GTR-2-FS	Tube Rocker, double tier, 120v, 60Hz, US plug, 9.9" x 6.7" platforms, 25rpm	Each
GTR-2-FS-UK-EU	Tube Rocker, double tier, 240v, 50Hz, UK & EU plugs, 9.9" x 6.7" platforms, 25rpm	Each

If two platforms is more than you need, ask about the Globe Scientific GTR-FS Single Tier Rocker!



GTR-FS



www.globescientific.com

Customer Service, Sales and Technical Support:

Phone 1 (800) 394-4562 • 1 (201) 599-1400

Fax 1 (201) 599-1406

E-mail mail@globescientific.com

GTR-3D / Multi-Directional Nutting Tube Rocker



*GTR-3D Nutating Tube Rocker
features 3-dimensional range of
motion*

*When 3D motion is needed, trust in the
simple yet reliable GTR-3D!*

The 3D nutating motion of the GTR-3D is ideal for gentle mixing. It is suitable for use in staining, DNA extraction and more. The fixed 20° tilt angle allows for a thorough mixing motion. Operation couldn't be easier: simply plug in and turn on. The included anti-slip, dimpled silicone mat accommodates a large variety of tubes.

Features:

- 3D Nutating motion for numerous methodologies
- 20rpm Fixed speed
- 20° Fixed tilt angle
- Simple plug & play operation
- Low noise, long life motor and stable platform

Multi-Directional Nutating Tube Rocker

3-Dimensional Nutating Motion



GTR-3D Specifications

Working area (each tier)	240mm W x 170mm D (9.4in W x 6.7in D)
Maximum load	3.3lbs (1.5kg)
Tilt angle	20° fixed
Voltage	120v 60Hz or 240v 50Hz
Power	6W
Speed	20rpm fixed
Dimensions (WxDxH)	200 × 160 × 160mm (7.9 x 6.3 x 6.3in)
Weight	2.5kg / 5.5lbs
Operating temperature	5-50 °C
Permissible relative humidity	80%RH (non-condensing)
Warranty	2 Years

ORDERING INFORMATION

Item #	Description	Unit
GTR-3D	Tube Rocker, 3D motion, 120v, 60Hz, US plug	Each
GTR-3D-UK	Tube Rocker, 3D motion, 240v, 50Hz, UK plug	Each
GTR-3D-EU	Tube Rocker, 3D motion, 240v, 50Hz, EU plug	Each

www.globescientific.com

Customer Service, Sales and Technical Support:

Phone 1 (800) 394-4562 • 1 (201) 599-1400

Fax 1 (201) 599-1406

E-mail mail@globescientific.com

globe[®]
SCIENTIFIC INC.

GTRM-FS / Vacuum Tube Rockin' Roller



The GTRM-FS Vacuum Tube Rockin' Roller combines a gentle rocking with continuous rolling motion to ensure your samples are thoroughly mixed for optimal homogeneity.

For a truly unique and robust mixing motion at a value, the GTRM-FS roller-mixer simply delivers!

The unique design of the Globe Scientific GTRM-FS roller-mixer combines the operation of a vacuum tube roller with a see-saw rocking platform to allow for the ultimate in homogeneity of your blood/urine tubes and other sample types. This combined motion also helps ensure higher culture yields. The GTRM-FS is compatible for use in cold rooms and non-CO² incubators. The rolling motion is a fixed 36rpm and the rocking motion is set at +/-11°.

Features:

- Unique roller with see-saw rocking motion
- Simple plug & play operation
- 5 rollers allow for up to 8 vacuum tubes
- Small size uses minimal bench space

Vacuum Tube Rockin' Roller



The GTRM-FS Vacuum Tube Rockin' Roller combines a gentle rocking with continuous rolling motion to ensure your samples are thoroughly mixed for optimal homogeneity.

GTRM-FS Specifications	
Roller length	230mm (9in)
Maximum load	1.8lbs (0.8kg)
Maximum tilt angle	11° fixed
Voltage	120v 60Hz or 240v 50Hz
Power	6W
Speed	36rpm fixed
Dimensions (WxDxH)	260 x 155 x 140mm (10.2 x 6.1 x 5.5in)
Weight	3kg / 6.6lbs
Operating temperature	5-50 °C
Permissible relative humidity	80%RH (non-condensing)
Warranty	2 Years

ORDERING INFORMATION

Item #	Description	Unit
GTRM-FS	Vacuum Tube Roller-Mixer, 120v, 60Hz, US plug, 36rpm, 11° rocking angle	Each
GTRM-FS-UK	Vacuum Tube Roller-Mixer, 240v, 50Hz, UK plug, 36rpm, 11° rocking angle	Each
GTRM-FS-EU	Vacuum Tube Roller-Mixer, 240v, 50Hz, EU plug, 36rpm, 11° rocking angle	Each

www.globescientific.com

Customer Service, Sales and Technical Support:

Phone 1 (800) 394-4562 • 1 (201) 599-1400

Fax 1 (201) 599-1406

E-mail mail@globescientific.com



GTR-AVS / Variable Speed Analog Tube Roller



GTR-AVS Analog Tube Roller

The Globe Scientific GTR-AVS was designed for gently mixing a wide range of tubes, containers and bottles. The analog dial can be set anywhere between 10rpm and 70rpm. In addition to a rolling motion, the rollers are mounted slightly off-center to rise and fall in a “see-saw” fashion. These two motions ensure your samples are thoroughly mixed for optimal homogeneity. The six rollers can accommodate up to 8.8lbs or ten 15ml / 50ml centrifuge tubes.

Features:

- Speed range of 0-70rpm
- Six roller design for gentle sample agitation and ease of cleaning
- Cold room and incubator compatible
- DC brushless motor is quiet and maintenance free

For simple operation and thorough mixing of your tubes, bottles and containers, choose the Globe Scientific GTR-AVS!

Variable Speed Analog Tube Roller



The GTR-AVS is powerful yet simple to operate: turn on power then set roller speed using the analog dial.



The six roller configuration can accommodate up to ten 15mL or ten 50mL tubes and is compatible with a variety of other tube sizes

Specifications	GTR-AVS
Amplitude	24mm
Motor type	DC motor
Max. Load Capacity	4kg (8.8lbs)
Number of Rollers	6
Roller Size (Length)	280mm (11in)
Speed Range	0 - 70rpm
Operation Mode	Continuous
Voltage	100-240V, 50/60Hz
Power	25W
Dimensions (WxDxH)	260 x 450 x 120mm (10.2 x 17.7 x 4.7in)
Weight	4.5kg (9.9lbs)
Operating Temperature	5° - 40° C
Permissible Relative Humidity	80% RH (non-condensing)
Protection Class	IP21
Warranty	2 Years

ORDERING INFORMATION

Item #	Description	Unit
GTR-AVS	Variable Speed Analog Tube Roller, 6 Rollers, 120-240v, 50/60Hz	Each

www.globescientific.com

Customer Service, Sales and Technical Support:

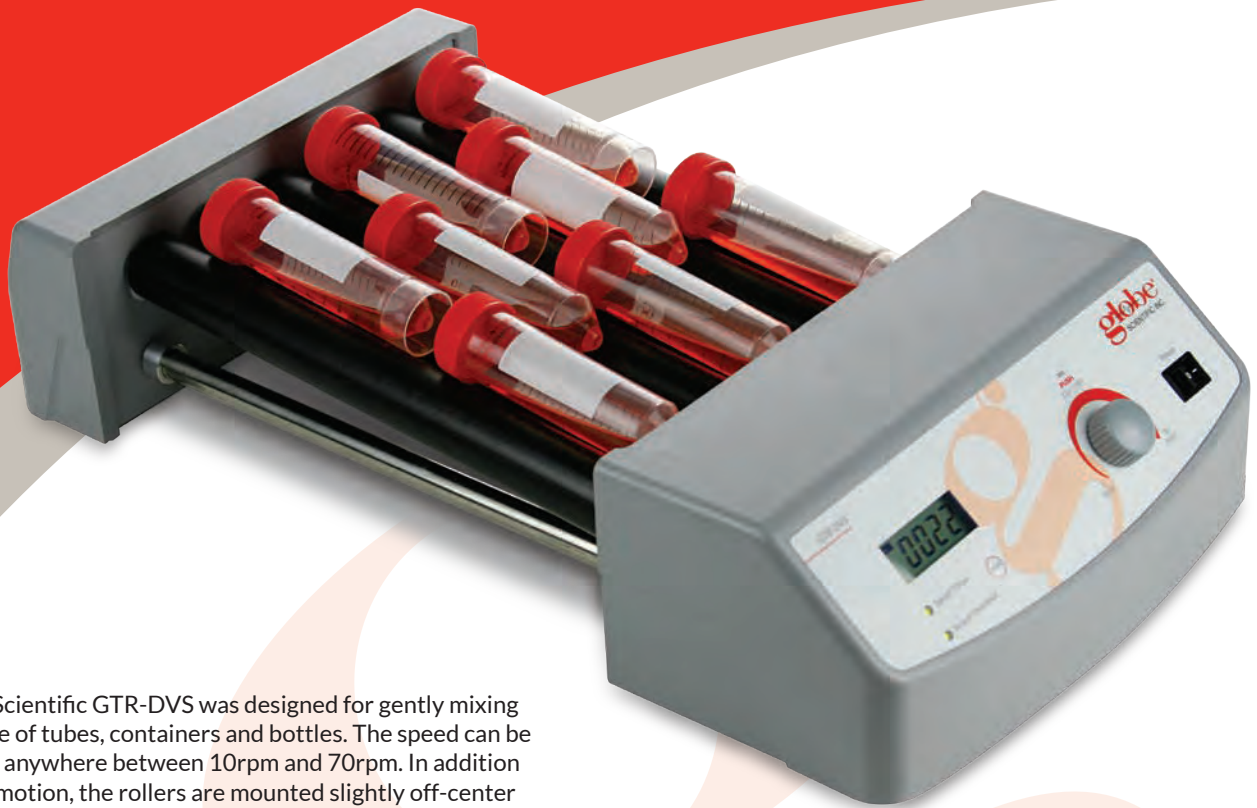
Phone 1 (800) 394-4562 • 1 (201) 599-1400

Fax 1 (201) 599-1406

E-mail mail@globescientific.com



GTR-DVS / Variable Speed Digital Tube Roller



GTR-DVS Digital Tube Roller

The Globe Scientific GTR-DVS was designed for gently mixing a wide range of tubes, containers and bottles. The speed can be set digitally anywhere between 10rpm and 70rpm. In addition to a rolling motion, the rollers are mounted slightly off-center to rise and fall in a "see-saw" fashion. These two motions ensure your samples are thoroughly mixed for optimal homogeneity. The six rollers can accommodate up to 8.8lbs or ten 15ml / 50ml centrifuge tubes.

Features:

- LCD display of speed and time
- Speed range of 10-70rpm
- Six roller design for gentle sample agitation and ease of cleaning
- Continuous or timed operation
- Rolling motion with see-saw movement
- View both speed and time concurrently
- Cold room and incubator compatible
- DC brushless motor is quiet and maintenance free

For simple, accurate operation and thorough mixing of your tubes, bottles and containers, choose the Globe Scientific GTR-DVS!

Variable Speed Digital Tube Roller



The GTR-DVS can accurately set time and speed using the simple parameter adjustment knob and digital display



The six roller configuration can accommodate up to ten 15mL or ten 50mL tubes and is compatible with a variety of other tube sizes

Specifications	GTR-DVS
Amplitude	24mm
Motion	Rocking and rolling
Max. Load Capacity	4kg (8.8lbs)
Number of Rollers	6
Roller Size (Length)	280mm (11in)
Speed Range	10 -70rpm
Speed Display	LCD
Timer	Yes
Timer Display	LCD
Time Setting Range	1-1199min
Operation Mode	Continuous or timed
Voltage	100-240V, 50/60Hz
Power	30W
Dimensions (WxDxH)	260 x 450 x 120mm (10.2 x 17.7 x 4.7in)
Weight	5.1kg (11.2lbs)
Operating Temperature	5° - 40° C
Permissible Relative Humidity	80% RH (non-condensing)
Protection Class	IP21
Warranty	2 Years

ORDERING INFORMATION

Item #	Description	Unit
GTR-DVS	Variable Speed Digital Tube Roller, 6 Rollers, 120-240v, 50/60Hz	Each

www.globescientific.com

Customer Service, Sales and Technical Support:

Phone 1 (800) 394-4562 • 1 (201) 599-1400

Fax 1 (201) 599-1406

E-mail mail@globescientific.com



GTR-HA

Analog Tube Rotator



*GTR-HA Analog Tube Rotator shown
with 15mL and 50mL tube clips*

The GTR-HA Tube Rotator provides slow to vigorous mixing of your biological samples and solutions in a simple, lightweight and easy to use design. Simply turn on the power and adjust the speed using the analog dial for your desired level of mixing. The unit includes a rotisserie-style stainless steel platen and interchangeable tube holder clips for 1.5mL, 15mL and 50mL tubes.

Features:

- End over end motion/agitation
- Provides gentle and effective mixing of biological samples
- Adjustable speed range from 0 to 80rpm
- Unit includes an assortment of twelve 15mL, twelve 50mL and thirty-six 1.5mL/2.0mL tube holder clips
- Simple, robust design for years of worry-free operation

Analog Tube Rotator



Simple analog dial for easy speed adjustment



Tube clips are easily changed by sliding into the channels on the rotisserie tube rack



1.5/2.0mL, 15mL and 50mL tube clips are included and can be mixed and matched on the rotisserie tube holder

GTR-HA Specifications

Tube Capacity	Forty-eight 1.5mL tubes, sixteen 15mL tubes or eight 50mL tubes
Speed Range	0 - 80rpm
Operation Mode	Continuous
Voltage	100-240V, 50/60Hz
Power	20W
Dimensions (WxDxH)	300 x 220 x 310mm (11.8 x 8.7 x 12.2in)
Weight	2.7kg (6.0lbs)
Operating Temperature	5° - 40° C
Permissible Relative Humidity	80% RH (non-condensing)
Protection Class	IP21
Warranty	2 Years

ORDERING INFORMATION

Item #	Description	Unit
GTR-HA	Analog Tube Rotator, Horizontal, Adjustable Speed, 120-240v, 50/60Hz, (Includes 36 each 1.5mL/2.0mL, 12 each 15mL and 12 each 50mL Tube Holder Clips)	Each
GTR-HA-1.5	Tube Holder Clips for 1.5mL/2.0mL Microcentrifuge Tubes	12
GTR-HA-15	Tube Holder Clips for 15mL Centrifuge Tubes	12
GTR-HA-50	Tube Holder Clips for 50mL Centrifuge Tubes	12

globe[®]
SCIENTIFIC INC.

www.globescientific.com

Customer Service, Sales and Technical Support:

Phone 1 (800) 394-4562 • 1 (201) 599-1400

Fax 1 (201) 599-1406

E-mail mail@globescientific.com

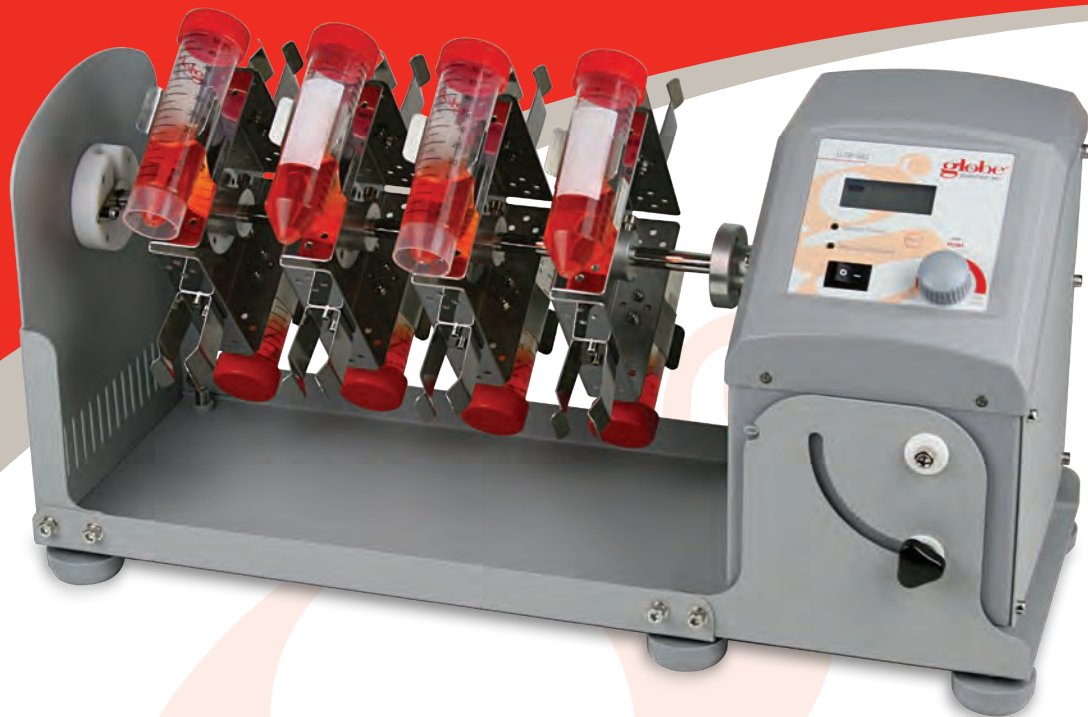
© 2019 Globe Scientific Inc. All rights reserved.

The Globe Scientific logo is a registered trademark of Globe Scientific Inc.

GTR-HA Flyr 19086 1M

GTR-HD

Digital Tube Rotator



The GTR-HD Tube Rotator provides slow to vigorous mixing of your biological samples and solutions with advanced features you expect. Adjusting the speed and time are easily performed using the parameter adjustment knob on the front panel.

A metal chassis and rotisserie-style tube holders provide a solid, robust design for years of worry-free mixing. Swapping the included 50ml vertical holder is a breeze: lift the retention lever on the left, angle the main housing on the right and lift out – replacing would be the opposite process. Both vertical (“end over end” mixing) and horizontal (“rolling” mixing) tube holders are available for 1.5mL/2.0mL, 15mL and 50mL tubes.

Features:

- Heavy-duty metal chassis and tube holder/rotisserie accessories
- Digital adjustment of speed and time
- LCD display
- Speed range from 10 to 70rpm
- A wide variety of accessories are available
- Cold room friendly
- Maintenance-free brushless DC motor

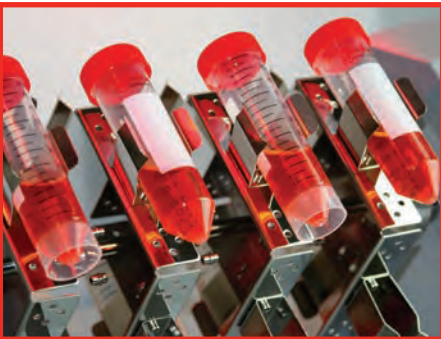
GTR-HD Digital Tube Rotator shown with included 50mL vertical tube holder

Choose Globe Scientific's GTR-HD Tube Rotator for years of consistent, accurate mixing!

Digital Tube Rotator



The digital display of the GTR-HD can be easily and accurately set using the parameter adjustment knob



Included tube holder accommodates (16) 50mL tubes with additional size and position holders available



Stainless steel tube holders provide years of trouble free use

globe[®]
SCIENTIFIC INC.

GTR-HD Specifications

Tube Capacity	Forty-eight 1.5mL/2.0mL tubes, twenty-four 15mL tubes or twenty-four 50mL tubes
Speed Display	LCD
Timer Display	LCD
Timer	1-1199min
Speed Range	10 -70rpm
Operation Mode	Continuous or timed
Voltage	100-240V, 50/60Hz
Power	40W
Dimensions (WxDxH)	510 x 220 x 260mm (20.1 x 8.7 x 10.2in)
Weight	4.5kg (10lbs)
Operating Temperature	5° - 40° C
Permissible Relative Humidity	80% RH (non-condensing)
Protection Class	IP21
Warranty	2 Years

ORDERING INFORMATION

Item #	Description	Unit
GTR-HD	Digital Tube Rotator, Horizontal, Adjustable Speed and Angle, 120-2240v, 50-60Hz, (Includes 16-Place Tube Holder for 50mL Tubes)	Each
GTR-HD-1.5H	Tube Holder, 48 Horizontal Places for 1.5mL Microcentrifuge Tubes	Each
GTR-HD-15H	Tube Holder, 48 Horizontal Places for 15mL Centrifuge Tubes	Each
GTR-HD-50H	Tube Holder, 24 Horizontal Places for 50mL Centrifuge Tubes	Each
GTR-HD-1.5V	Tube Holder, 32 Vertical Places for 1.5mL Microcentrifuge Tubes	Each
GTR-HD-15V	Tube Holder, 16 Vertical Places for 15mL Centrifuge Tubes	Each
GTR-HD-50V	Tube Holder, 16 Vertical Places for 50mL Centrifuge Tubes	Each

www.globescientific.com

Customer Service, Sales and Technical Support:

Phone 1 (800) 394-4562 • 1 (201) 599-1400

Fax 1 (201) 599-1406

E-mail mail@globescientific.com

GTR-IA

Analog Tube Rotator

The GTR-IA Tube Rotator packs a lot of value in a simple, easy to use package. With a 'Ferris Wheel' disk design and analog speed control, operation and setup can be completed in minutes the very first time and every time. The fixed angle disk utilizes clips to hold 1.5/2.0mL, 15mL and 50mL tubes. The clips are included with each unit and additional clips are also available for separate purchase.

Features:

- Small but stable design uses minimal bench space
- Analog adjustment of speed from 0 to 80rpm
- Fixed angle for end-over-end mixing
- Includes tube clips for 1.5/2.0mL, 15mL and 50mL tubes
- Cold room friendly



*GTR-IA Analog
Tube Rotator shown
with included 50mL tube clips*

Analog Tube Rotator



Simple analog dial for easy speed adjustment



Tube clips are included for 1.5/2.0mL, 15mL and 50mL tubes

GTR-IA Specifications

Motor type	DC motor
Speed range	0-80rpm
Tube capacity	Forty-eight 1.5/2.0mL tubes, sixteen 15mL tubes or eight 50mL tubes
Operation mode	Continuous
Voltage	100-240V, 50/60Hz
Power	20W
Dimensions [D×W×H]	300 × 220 × 310mm / 11.8 × 8.7 × 12.2in
Operating Temperature	5° - 40° C
Permissible Relative Humidity	80% RH (non-condensing)
Protection Class	IP21
Warranty	2 Years

ORDERING INFORMATION

Item #	Description	Unit
GTR-IA	Industrial Tube Rotator, analog, variable speed, fixed angle, 120-240v, 50/60Hz, (Includes:Configurable Disk with Tube Holder Clips, 12 each 1.5/2.0mL, 12 each 15mL and 12 each 50mL)	Each
GTR-IA-1.5	Tube Holder Clips, 12 each, for 1.5mL microcentrifuge tubes	Each
GTR-IA-15	Tube Holder Clips, 12 each, for 15mL centrifuge tubes	Each
GTR-IA-50	Tube Holder Clips, 12 each, for 50mL centrifuge tubes	Each

GTR-ID

Industrial Tube Rotator



GTR-ID Industrial Tube Rotator shown with included 50mL tube holder disk

The Globe Scientific GTR-ID Industrial Tube Rotator has a rugged, workhorse quality and a value proposition that simply can't be beat!

The GTR-ID Tube Rotator efficiently mixes your biological samples and solutions using the included 50ml tube holder disk or the optional 1.5mL/2.0mL and 15mL disks. An industrial-style metal housing with tilt adjustment ensures a lifetime of worry-free operation. Consistent tilt adjustment is performed by referring to the graduated angle scale, which is printed directly on the unit housing.

The unit housing, tube holder disks and tube clamps and are metal, alleviating the breaking of plastic holders and clamps seen in models from other manufacturers. Optional disk stacking rods allow up to two tube disk holders to be used simultaneously for increased productivity.

Features:

- Heavy-duty metal chassis and tube holders/disk accessories
- Digital adjustment of speed and time
- LCD display
- Speed range from 10 to 70rpm
- Full adjustment of mixing action from end over end or rolling
- Adjustable mixing angle from 0° to 90°
- A wide variety of accessories are available
- Cold room friendly
- Can stack up to two tube holders/disks for additional capacity

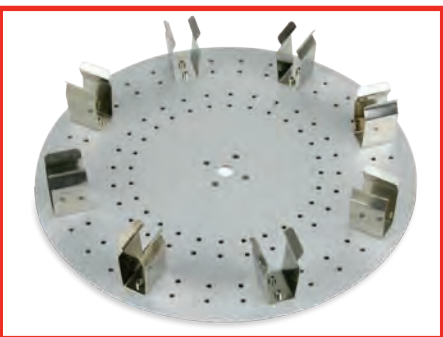
Industrial Tube Rotator



Digital display of the GTR-ID can be accurately set using the parameter adjustment knob



Included tube holder disk accommodates (8) 50mL tubes – additional tube holder disks are available



Robust stainless steel tube holder disks for years of trouble free use

GTR-ID Specifications

Tilt Angle	0° - 90°
Speed Range	10 - 70rpm
Speed Display	LCD
Timer Display	LCD
Timer	1-1199min
Operation Mode	Continuous or timed
Motor Type	DC motor
Voltage	100-240V, 50/60Hz
Power	40W
Dimensions (WxDxH)	280 x 210 x 300mm (11.0 x 8.3 x 11.8in)
Weight	4.5kg (10lbs)
Operating Temperature	5° - 40° C
Permissible Relative Humidity	80% RH (non-condensing)
Protection Class	IP21
Warranty	2 Years

ORDERING INFORMATION

Item #	Description	Unit
GTR-ID	Industrial Tube Rotator, Digital, Variable Speed and Angle, 120-240v, 50/60Hz, (Includes: 8-Place Disk for 50mL Tubes)	Each
GTR-ID-1.5	Tube Holder Disk, 60-Place, for 1.5mL Microcentrifuge Tubes	Each
GTR-ID-15	Tube Holder Disk, 16-Place, for 15mL Centrifuge Tubes	Each
GTR-ID-50	Tube Holder Disk, 8-Place, for 50mL Centrifuge Tubes	Each
GTR-ID-RODS	Tube Holder Disk Stacking Rods (allows use of 2 GTR-ID Tube Holder Disks at once)	4

www.globescientific.com

Customer Service, Sales and Technical Support:

Phone 1 (800) 394-4562 • 1 (201) 599-1400

Fax 1 (201) 599-1406

E-mail mail@globescientific.com

globe[®]
SCIENTIFIC INC.

GSE / General Purpose Magnetic Stirrer

*When a quality, economic stirrer is needed,
choose the Globe Scientific GSE!*

The GSE Magnetic Stirrer from Globe Scientific is an excellent choice for most basic stirring applications. The unit comes with integrated retort stand to hold electrochemistry probes, temperature probes and more. A spill-resistant chassis and universal voltage adapters are included.

Features:

- Universal voltage with included adapters
- Simple analog dial operation
- Used for various mixing applications
- PET surface for high chemical resistance
- Virtually silent operation & vibration-free
- Spill resistant chassis



GSE General Purpose Magnetic Stirrer

General Purpose Magnetic Stirrer



Specifications	GSE
Working Area	120mm (4.7 inches)
Maximum Volume	1.5L (H ₂ O)
Magnetic Bar Length	40mm (1.6 inches)
Voltage	110-120V/220-230V, 50/60Hz
Motor Output Power	1.2W
Power	7.2W
Motor Type	Brushless DC motor
Speed Range	300 - 2000rpm
Spill Protection	IP21
Dimensions (WxDxH)	150 x 145 x 50mm (5.9 x 5.7 x 2.0 in)
Weight	0.3kg (0.7 lbs)
Operating Temperature	5° - 40° C
Permissible Relative Humidity	80% RH (non-condensing)
Warranty	2 Years

ORDERING INFORMATION

Item #	Description	Unit
GSE	Magnetic Stirrer, 100-240v, 50/60Hz, with US, UK and EU plugs and retort stand	Each

www.globescientific.com

Customer Service, Sales and Technical Support:

Phone 1 (800) 394-4562 • 1 (201) 599-1400

Fax 1 (201) 599-1406

E-mail mail@globescientific.com

globe[®]
SCIENTIFIC INC.

GSF / Low Profile Magnetic Stirrer



GSF Low Profile Magnetic Stirrer

The GSF Low Profile Magnetic Stirrer is an ideal choice for most basic stirring applications. With a height of only 15mm (0.6 inches), the GSF can be stored virtually anywhere and is easily transported. An automated reverse motion setting provides additional agitation as needed.

Features:

- Single direction (stir) and auto-reverse (mix) functionality
- Variable speed range from 15 to 1000rpm
- Used for various mixing applications
- Includes all power adaptors (universal voltage)
- PET surface for high chemical resistance
- Virtually silent operation
- cTUVus approved for UL and CSA
- Spill resistant chassis

*For simple, robust stirring, choose the
Globe Scientific GSF!*

Low Profile Magnetic Stirrer

Specifications	GSE
Working Area	90mm (3.5 inches)
Maximum Volume	0.8L (H ₂ O)
Magnetic Bar Length	40mm (1.6 inches)
Voltage	110-120V/220-230V, 50/60Hz
Motor Output Power	3W
Power	5W
Motor Type	Motorless
Speed Range	15 - 1000rpm
Spill Protection	IP65
Dimensions (WxDxH)	175 x 120 x 15mm (6.9 x 4.7 x 0.6 in)
Weight	0.3kg (0.7 lbs)
Operating Temperature	5° - 40° C
Permissible Relative Humidity	80% RH (non-condensing)
Warranty	2 Years

ORDERING INFORMATION

Item #	Description	Unit
GSF	Magnetic Stirrer, 100-240v, 50/60Hz, with US, UK and EU plugs	Each



www.globescientific.com

Customer Service, Sales and Technical Support:

Phone 1 (800) 394-4562 • 1 (201) 599-1400

Fax 1 (201) 599-1406

E-mail mail@globescientific.com

globe[®]
SCIENTIFIC INC.

3375 Series

Manual Pipet Controllers



3375 Series Manual Pipette Controllers

The Globe Scientific 3375 Series of Manual Pipette Controllers are available in your choice of five colors. They provide easy, accurate filling and dispensing of serological pipettes between 0.1 to 100mL. Squeeze the bulb to fill your pipette, then aspirate by moving the analog lever — slightly for slow, more for fast. Blow out is accomplished by pressing the button just below the bulb. Your 3375 is protected by an easily replaced internal 3µm hydrophobic filter.

Features:

- Ease of use
- Precise pipetting control
- Robust and light weight
- Compatible with most plastic and glass pipettes from 0.1 - 100mL
- 3µm Replaceable hydrophobic filter
- Easy cleaning and maintenance
- Available in 5 colors

ORDERING INFORMATION

Item #	Description	Unit
3375B	Manual Pipette Controller, Blue	Each
3375G	Manual Pipette Controller, Green	Each
3375LB	Manual Pipette Controller, Light Blue	Each
3375R	Manual Pipette Controller, Red	Each
3375Y	Manual Pipette Controller, Yellow	Each
3375-FIL	3.0µm Filter	Each